



## Product Description

Abesco CT120 Cable Transits are firestop devices which are designed to allow cables to penetrate fire-rated floors and walls. They consist of a square section steel sleeve, which contains the heat reactive graphite based intumescent material. The transits can be opened to provide an easy retro-fit option where cables are pre-installed, and are designed to allow for the installation or removal of additional cables. When exposed to temperatures of approximately 300°F the graphite based intumescent material begins to expand (intumesce) rapidly to form a solid insulating char plug which effectively closes and seals the CT120 to prevent the passage of fire and smoke thru the fire-rated wall or floor. Each CT120 is supplied with 2 end plugs which are inserted after the cables have been installed to reduce smoke leakage. The CT120's are fixed in position using specially designed CT Mounting Flanges which clamp onto the transit and require no additional fixing to the wall or floor.

### CT120 CABLE TRANSIT FEATURES:

- Easy installation – saves labor cost**
- Intumescent material unaffected by moisture**
- Suitable for use in Concrete Floors and Walls, Drywall, and Wooden Floors**
- UL Classified – complies with Building Codes**
- Flexibility – add extra CT120's as your requirements grow.**

## Testing and Performance Data

Tested in Accordance with ASTM E814, UL1479  
 Also tested to BS 476 part 20.  
 UL Classified 1 and 2 Hour rating  
 See UL Fire Resistance Directory under Through Penetration Firestop Device



FOR USE IN THROUGH PENETRATION FIRESTOP SYSTEMS SEE UL DIRECTORY OF PRODUCTS CERTIFIED FOR CANADA AND UL FIRE RESISTANCE DIRECTORY 24KP

## Physical Properties

<b>Nominal Size</b>	4"	2.5"	4" Diameter
<b>Dimensions</b>	4" x 4"	2.5" x 2.5"	4" OD
<b>Length</b>	10"	10"	10"
<b>Shell Construction</b>	22 Gauge Steel	22 Gauge Steel	22 Gauge Steel
<b>Finish</b>	Red	Red	Red

## Specifications

All installations shall be in strict accordance with manufacturers printed instructions. The fire-rated cable transit device shall be tested in accordance with ASTM E814 (UL1479) and classified by Underwriters Laboratories Inc as a Through-Penetration Firestop Device for 1 or 2 Hour rating.

All cables shall be sealed with a UL Classified system or device as listed within the current UL Fire Resistance Directory, or have approved shop drawings prior to installation.

Suitability for a particular application should be determined prior to installation.

## Application

Abesco CT120 Cable Transits are used to seal cables which penetrate thru 1 and 2 hour fire-rated concrete walls and floors, and are suitable for most common types of construction including concrete floors, concrete walls, concrete block walls and gypsum drywall assemblies, and rated wooden floor constructions. Individual CT120 Cable Transits can be ganged together to form duplex or triplex units using special CT Mounting Flanges (which are supplied separately). Suitable for data, communications and electrical supply cables, CT120 Cable Transits offer flexibility, expandability, and reliability.

As part of our policy of ongoing improvement, we reserve the right to modify, alter or change product specifications without giving notice. Product illustrations are representations only. All information contained in this document is provided for guidance only, and as Abesco Limited has no control over the installation methods of the products, or of the prevailing site conditions, no warranties expressed or implied are intended to be given as to the actual performance of the products mentioned or referred to, and no liability whatsoever will be accepted for any loss, damage or injury arising from the use of the information given of products mentioned or referred to herein.

Abesco LLC  
 Unit 325  
 9561 Satellite Blvd.  
 Orlando, FL 32837  
 USA  
 Tel: 888-FIRESTP  
 Fax: 407-851-3388

Abesco Ltd, Abesco House  
 Laurencekirk Business Park  
 Laurencekirk  
 Scotland, UK  
 AB30 1EY  
 Tel: +44 (0) 1561-377766  
 Fax: +44 (0) 1561-378887

## Installation Methods and Typical Installations

Abesco CT120 cable transits are very easy to install, and there is no requirement to cut lengths of intumescent material on site as they are supplied ready to go with the correct amount of intumescent material pre-installed.

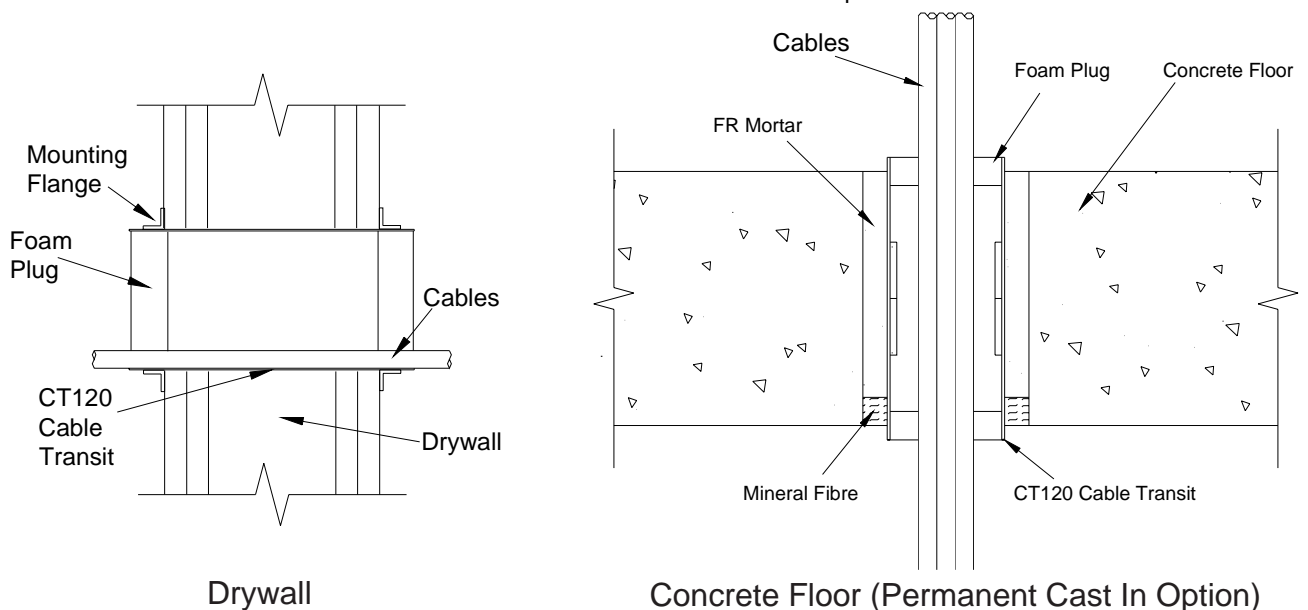
### New Cabling Installation

1. Select the size of CT120 required.
2. Cut or form a suitable size opening in the floor or wall, ensuring that any annular space between the CT120 and the opening is within the limits defined by the tested constructions.
3. Slide the CT120 into the previously formed opening, making sure that it is positioned centrally within the thickness of the floor or wall ensuring that an equal length protrudes either side.
4. CT120 Cable Transits are installed using CT Mounting Flanges which are friction fitted. Using the correct size CT Mounting Flanges, remove the small nut and bolt from the corner of each flange and fit over each end of the CT120 (ie 1 flange on each side of wall). Slide the flange until it is pressed against the surface of the wall or floor. Re-fit the nut and bolt provided and tighten securely in position. Once secured by tightening, the mounting flanges DO NOT need to be fixed to the wall.
5. Remove the supplied end plugs and pass the cables through the CT120 and support on either side of wall or floor as required. Re-fit the end plugs into both ends of CT120 around the cables.

### Existing Cable Installation

1. Select the correct size of CT120 to suit the existing opening. If necessary enlarge the opening to allow for installation ensuring that any annular space between the CT120 and the opening will be within the limits defined by the tested constructions.
2. Open the CT120, remove the supplied end plugs and fit around the existing cables. Close the CT120 around the cables.
3. Slide the CT120 into the previously formed opening, making sure that it is positioned centrally within the thickness of the floor or wall ensuring that an equal length protrudes either side.
4. CT120 Cable Transits are installed using CT Mounting Flanges which are friction fitted. Using the correct size CT Mounting Flanges, remove the small nut and bolt from the corner of each flange and fit over each end of the CT120 (ie 1 flange on each side of wall). Slide the flange until it is pressed against the surface of the wall or floor. Re-fit the nut and bolt provided and tighten securely in position. Once secured by tightening, the mounting flanges DO NOT need to be fixed to the wall.

NOTE: Permanent Cast In Option - In Concrete Floors, CT120's can be permanently cast into the floor by back-filling the annular space with Abesco FR Mortar.



As part of our policy of ongoing improvement, we reserve the right to modify, alter or change product specifications without giving notice. Product illustrations are representations only. All information contained in this document is provided for guidance only, and as Abesco Limited has no control over the installation methods of the products, or of the prevailing site conditions, no warranties expressed or implied are intended to be given as to the actual performance of the products mentioned or referred to, and no liability whatsoever will be accepted for any loss, damage or injury arising from the use of the information given of products mentioned or referred to herein.

Abesco LLC  
Unit 325  
9561 Satellite Blvd.  
Orlando, FL 32837  
USA  
Tel: 888-FIRESTP  
Fax: 407-851-3388

Abesco Ltd, Abesco House  
Laurencekirk Business Park  
Laurencekirk  
Scotland, UK  
AB30 1EY  
Tel: +44 (0) 1561-377766  
Fax: +44 (0) 1561-378887