



Abesco CP500 Fire Rated Water Based Silicone Caulk

Technical Data Sheet

Product Description

CP500 FR WB Silicone Caulk is a one component low-modulus sealant designed to prevent the spread of fire and smoke from one compartment to another through joints and gaps in fire separating walls and floors. It has excellent adhesion and when cured forms a flexible, strong silicone seal.

CP500 FR WB Silicone Caulk has an emulsion cure system, and is unaffected by moisture or high humidity and is suitable for a wide range of other non-fire rated applications.

It is paintable* with most types household paints and odourless, can be used on humid surfaces and requires only water to clean down tooling and overfill.

CP500 FR WB Silicone Caulk features:

Environmentally friendly - Solvent free

Flexible sealant

Excellent adhesion to most building substrates

Very easy to install and finish

Suitable for external use

Unaffected by moisture or high humidity

Paintable*

* Depending on paint type. Abesco strongly recommend a trial is undertaken on an unseen area before major painting is undertaken.

Application

CP500 FR WB Silicone Caulk is used to seal gaps in construction and through-penetrations against the passage of fire, smoke and gases. CP500 has been tested where services penetrate through concrete walls and floors, and drywall constructions, and is suitable for use around copper and steel pipes, steel conduits, electrical cables, data and telephone cables.

As part of our policy of ongoing improvement, we reserve the right to modify, alter or change product specifications without giving notice. Product illustrations are representations only. All information contained in this document is provided for guidance only, and as Abesco Limited has no control over the installation methods of the products, or of the prevailing site conditions, no warranties expressed or implied are intended to be given as to the actual performance of the products mentioned or referred to, and no liability whatsoever will be accepted for any loss, damage or injury arising from the use of the information given of products mentioned or referred to herein.

Physical Properties

Cure System:	Emulsion
Specific gravity (approx):	1.35
Weight shrinkage (approx):	12%
Skin-over time (approx):	10mins
Tack-free time (approx):	25mins
Application temperature:	35° to 105°F
Elastic recovery (EN 27389):	>80%
Joint movement capability:	25%
Service temperature range:	-58° to 250°F

Specifications

All installations shall be in strict accordance with manufacturers printed instructions. The firestopping silicone caulk shall be a one component, water based, low-modulus sealant, and shall be tested in accordance with ASTM E814 (UL1479) and classified by Underwriters Laboratories Inc for up to 2 Hour rating.

All through penetrations shall be sealed with a UL Classified system or device as listed within the current UL Fire Resistance Directory, or have approved shop drawings prior to installation.

Suitability for a particular application should be determined prior to installation.

Testing and Performance Data

Tested in Accordance with ASTM E814, UL1479

UL Classified 1 and 2 Hour rating

Please visit the UL website for details on our current system



FILL VOID OR CAVITY
MATERIALS FOR USE IN
THROUGH PENETRATION
FIRESTOP SYSTEMS SEE UL
DIRECTORY OF PRODUCTS
CERTIFIED FOR CANADA AND UL
FIRE RESISTANCE DIRECTORY
86JY

Also tested to BS 476 (British Standard), BS EN1366 (European), AS1530 (Australia and New Zealand)

Abesco LLC
Unit 325
9561 Satellite Blvd.
Orlando, FL 32837
USA
Tel: 888-FIRESTP
Fax: 407-851-3388

Abesco Ltd, Abesco House
Laurencekirk Business Park
Laurencekirk
Scotland, UK
AB30 1EY
Tel: +44 (0) 1561-377766
Fax: +44 (0) 1561-378887



Abesco CP500 Fire Rated Water Based Silicone Caulk

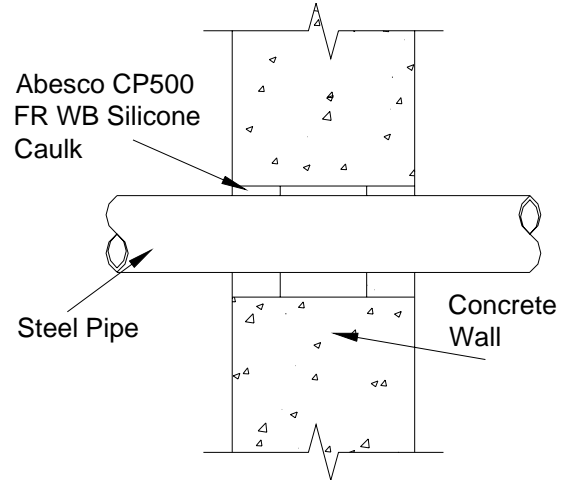
Technical Data Sheet

Installation Methods

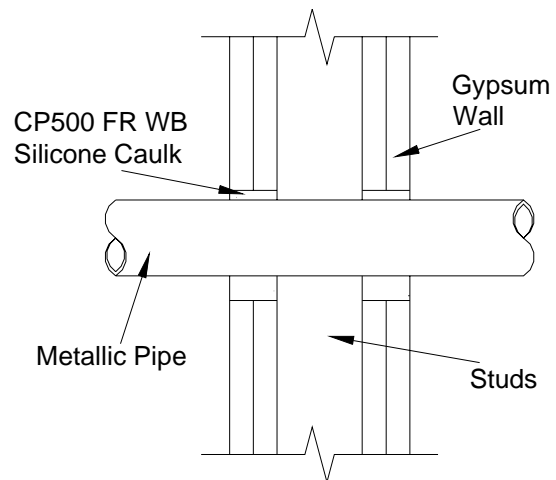
Abesco CP500 Fire Rated Water Based Silicone Caulk is very easy to install with only basic hand tools.

1. Areas to be sealed must be clean and free from all oil, grease, loose materials, rust or any other contamination.
2. Check that any annular space between the through penetration and the opening is within the limits defined by the tested constructions.
3. Some installations require mineral wool forming as an integral element in the approved system. When mineral wool is required, cut oversize and pack tightly into space between the opening and the service, ensuring that the forming is positioned to allow for correct depth of CP500 fill material to be installed (dependent on system design)
4. Using a suitable standard or bulk loading caulking gun, or by hand trowelling, ensure that the CP500 is worked into all areas to prevent voids, gaps or seams. Pay particular attention when sealing bundles of cables.
5. When sufficient depth of CP500 has been applied, the surface can be smoothed using a damp knife or spatula to leave a neat sealed finish.
6. Please always consult the current UL Fire Resistance Directory for details of tested constructions before commencing.

Typical Installations



Metallic Pipe through Concrete Wall



Metallic Pipe through Gypsum Wall

As part of our policy of ongoing improvement, we reserve the right to modify, alter or change product specifications without giving notice. Product illustrations are representations only. All information contained in this document is provided for guidance only, and as Abesco Limited has no control over the installation methods of the products, or of the prevailing site conditions, no warranties expressed or implied are intended to be given as to the actual performance of the products mentioned or referred to, and no liability whatsoever will be accepted for any loss, damage or injury arising from the use of the information given of products mentioned or referred to herein.

Abesco LLC
Unit 325
9561 Satellite Blvd.
Orlando, FL 32837
USA
Tel: 888-FIRESTP
Fax: 407-851-3388

Abesco Ltd, Abesco House
Laurencekirk Business Park
Laurencekirk
Scotland, UK
AB30 1EY
Tel: +44 (0) 1561-377766
Fax: +44 (0) 1561-378887