



Abesco CP 310 FR Acrylic Intumescent Caulk

Technical Data Sheet

Product Description

Abesco CP310 is a water based acrylic intumescent caulk which expands and forms an insulating char when exposed to fire or extreme heat. CP310 FR Acrylic Intumescent Caulk is easy to use and has excellent adhesion properties when used with most common building materials. It can be installed using a standard caulking gun (standard cartridge, 20 oz sausage, or bulk filled), pneumatic pumping equipment, or easily applied using a knife or trowel. CP310 does not contain any solvents, PCB's or asbestos, making it safe to use and environmentally friendly. Cleaning up is easy using just water, with no special handling requirements.

CP 310 FEATURES:

- Easy installation – saves labor cost**
- Intumescent – expands in a fire to seal around services**
- Halogen Free**
- Paintable when dry (after inspection)**
- UL Classified – complies with Building Codes**

Application

CP310 FR Acrylic Intumescent Caulk is used to seal gaps in construction and through-penetrations against the passage of fire, smoke and gases. CP310 has been tested where services penetrate through concrete walls and floors, and drywall constructions, and is suitable for use around copper and steel pipes, steel conduits, electrical cables, data and telephone cables, PVC and CPVC pipes (up to 2" diameter), HVAC ducts, and is also used with other Abesco products such as Z240 Pipe Collars and Series 2 Pipe Wraps.

As part of our policy of ongoing improvement, we reserve the right to modify, alter or change product specifications without giving notice. Product illustrations are representations only. All information contained in this document is provided for guidance only, and as Abesco Limited has no control over the installation methods of the products, or of the prevailing site conditions, no warranties expressed or implied are intended to be given as to the actual performance of the products mentioned or referred to, and no liability whatsoever will be accepted for any loss, damage or injury arising from the use of the information given of products mentioned or referred to herein.

Physical Properties

Physical State:	Paste
Flash Point:	>100°C
Viscosity:	N/A
Specific Gravity:	1.62 - 1.66 @ 20°C
Solubility in water:	Miscible when wet
pH:	8.4-9.2

Specifications

All installations shall be in strict accordance with manufacturers printed instructions. The firestopping caulk shall be a one part water based acrylic intumescent sealant, and shall be tested in accordance with ASTM E814 (UL1479) and classified by Underwriters Laboratories Inc for up to 2 Hour rating.

All through penetrations shall be sealed with a UL Classified system or device as listed within the current UL Fire Resistance Directory, or have approved shop drawings prior to installation.

Suitability for a particular application should be determined prior to installation.

Testing and Performance Data

Tested in Accordance with ASTM E814, UL1479

UL Classified 1 and 2 Hour rating

Please visit the UL website for details on our current system



FILL VOID OR CAVITY MATERIALS FOR USE IN THROUGH PENETRATION FIRESTOP SYSTEMS SEE UL DIRECTORY OF PRODUCTS CERTIFIED FOR CANADA AND UL FIRE RESISTANCE DIRECTORY 24KP

Also tested to BS 476 (British Standard), prEN1366 (European), AS1530 (Australia and New Zealand)

Abesco LLC
Unit 325
9561 Satellite Blvd.
Orlando, FL 32837
USA
Tel: 888-FIRESTP
Fax: 407-851-3388

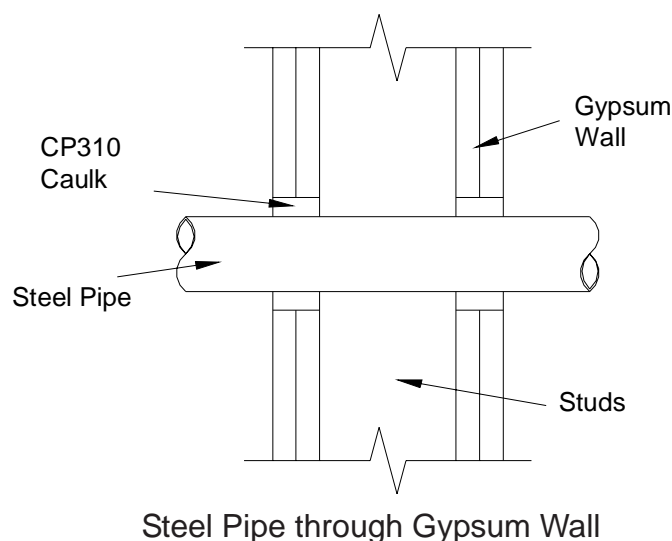
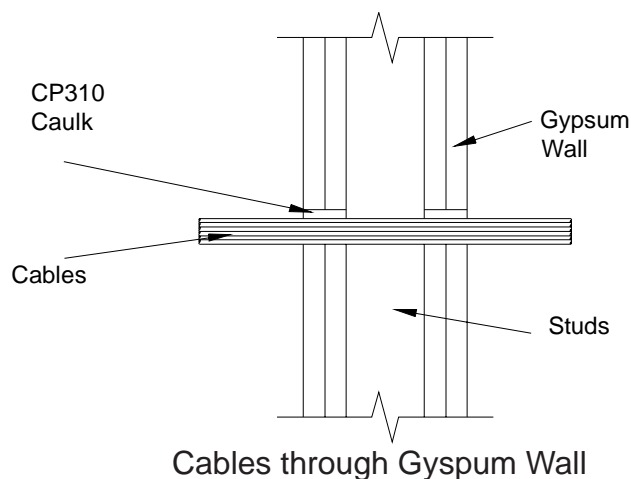
Abesco Ltd, Abesco House
Laurencekirk Business Park
Laurencekirk
Scotland, UK
AB30 1EY
Tel: +44 (0) 1561-377766
Fax: +44 (0) 1561-378887

Installation Methods

Abesco CP310 FR Acrylic Intumescent Caulk is very easy to install with only basic hand tools.

1. Areas to be sealed must be clean and free from all oil, grease, loose materials, rust or any other contamination.
2. Check that any annular space between the through penetration and the opening is within the limits defined by the tested constructions.
3. Some installations require mineral wool forming as an integral element in the approved system. When mineral wool is required, cut oversize and pack tightly into space between the opening and the service, ensuring that the forming is positioned to allow for correct depth of CP310 fill material to be installed (dependent on system design)
4. Using a suitable standard or bulk loading caulking gun, or by hand trowelling, ensure that the CP310 is worked into all areas to prevent voids, gaps or seams. Pay particular attention when sealing bundles of cables.
5. When sufficient depth of CP310 has been applied, the surface can be smoothed using a damp knife or spatula to leave a neat sealed finish.
6. Please always consult the current UL Fire Resistance Directory for details of tested constructions before.

Typical Installations



As part of our policy of ongoing improvement, we reserve the right to modify, alter or change product specifications without giving notice. Product illustrations are representations only. All information contained in this document is provided for guidance only, and as Abesco Limited has no control over the installation methods of the products, or of the prevailing site conditions, no warranties expressed or implied are intended to be given as to the actual performance of the products mentioned or referred to, and no liability whatsoever will be accepted for any loss, damage or injury arising from the use of the information given of products mentioned or referred to herein.

Abesco LLC
Unit 325
9561 Satellite Blvd.
Orlando, FL 32837
USA
Tel: 888-FIRESTP
Fax: 407-851-3388

Abesco Ltd, Abesco House
Laurencekirk Business Park
Laurencekirk
Scotland, UK
AB30 1EY
Tel: +44 (0) 1561-377766
Fax: +44 (0) 1561-378887